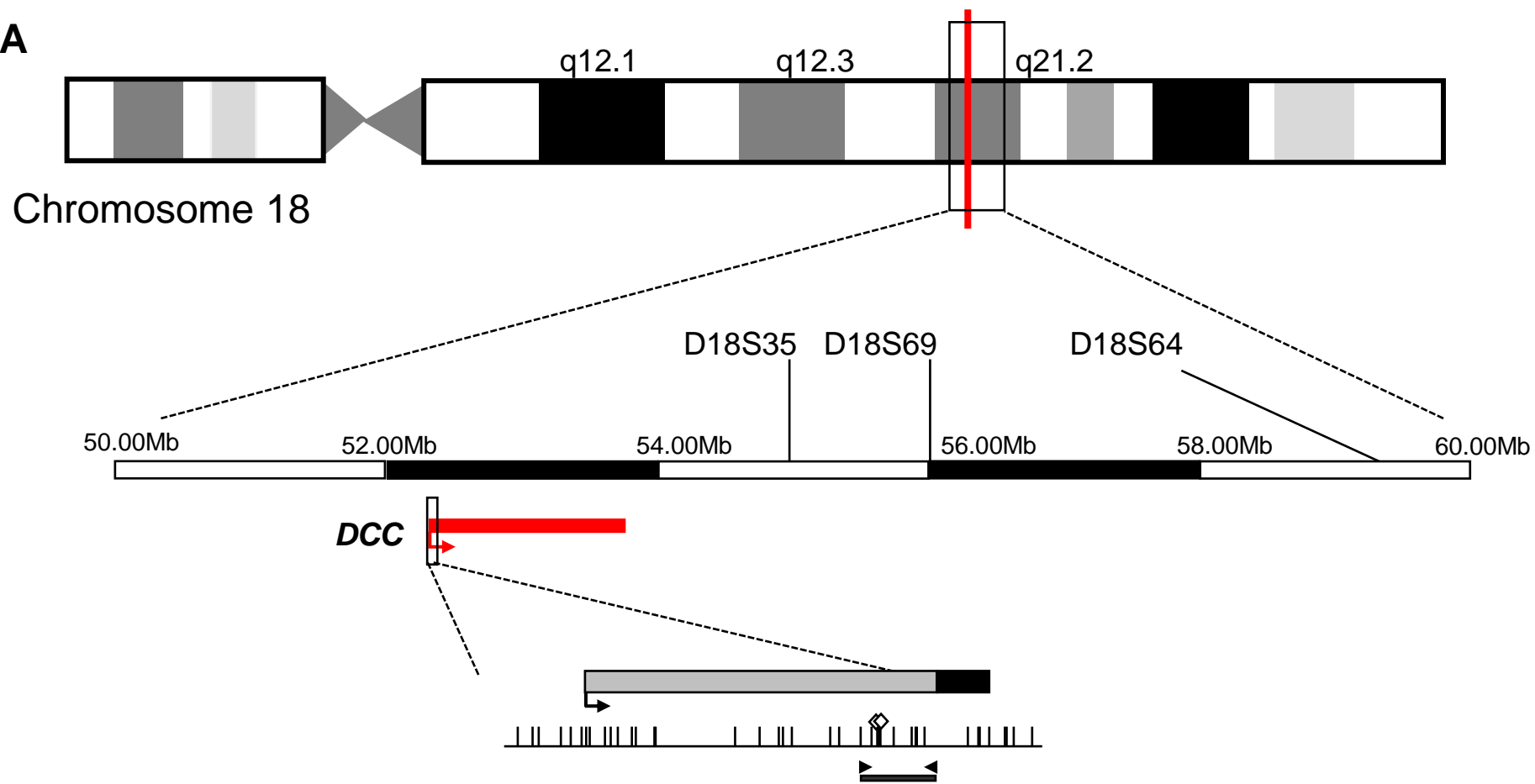


Figure 1

A



B

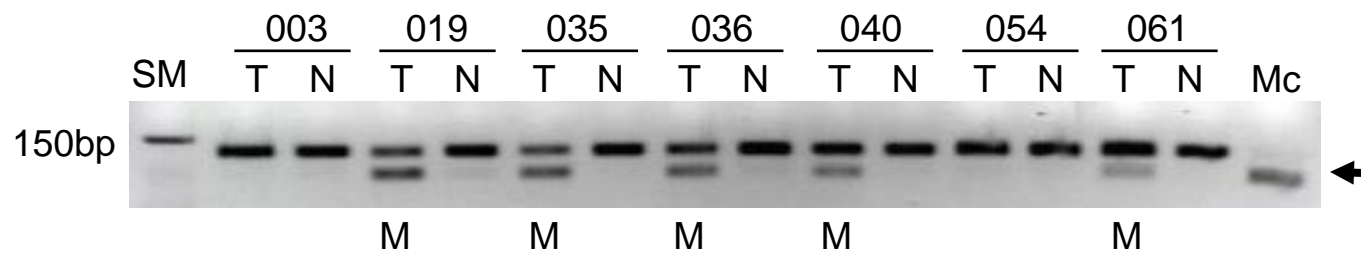


Figure 1

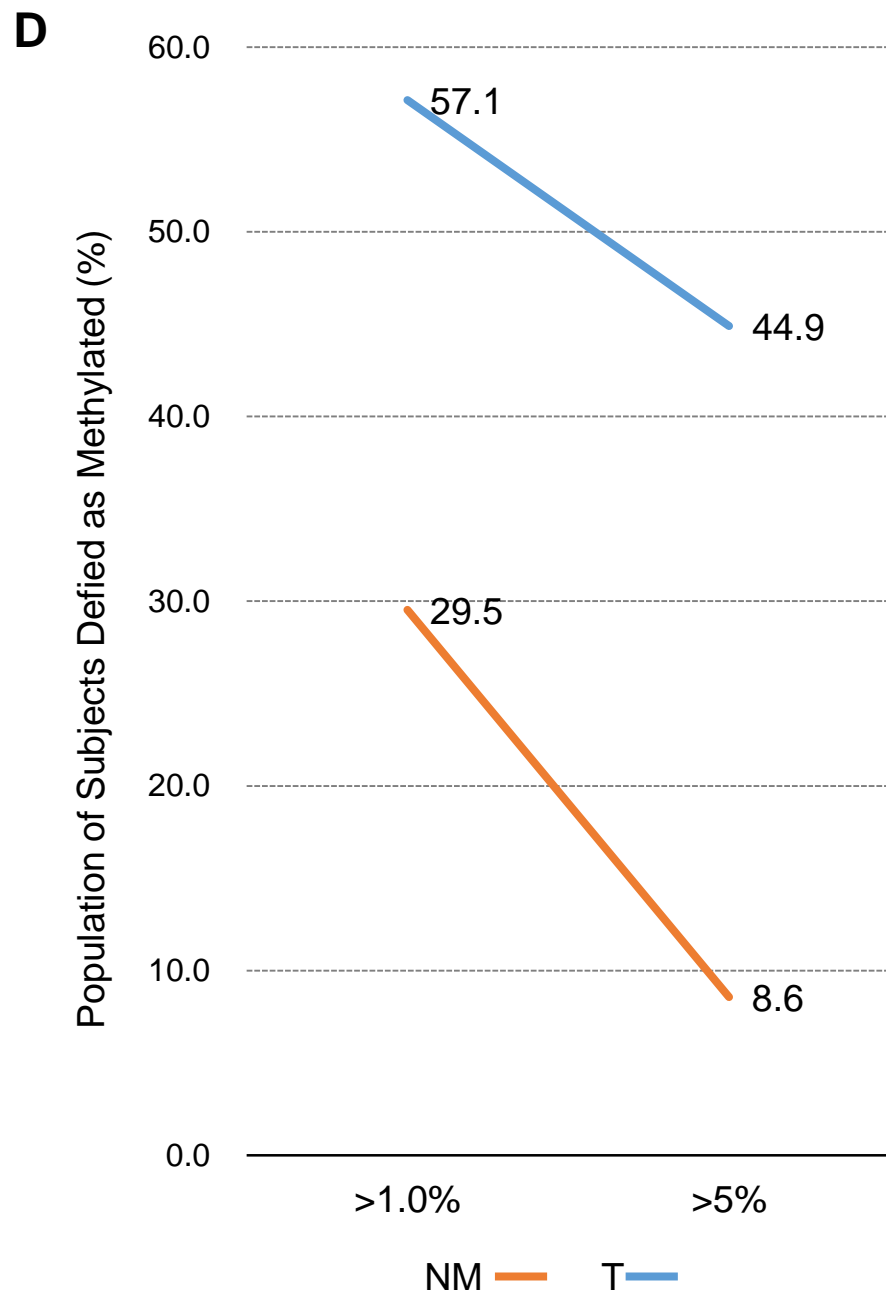
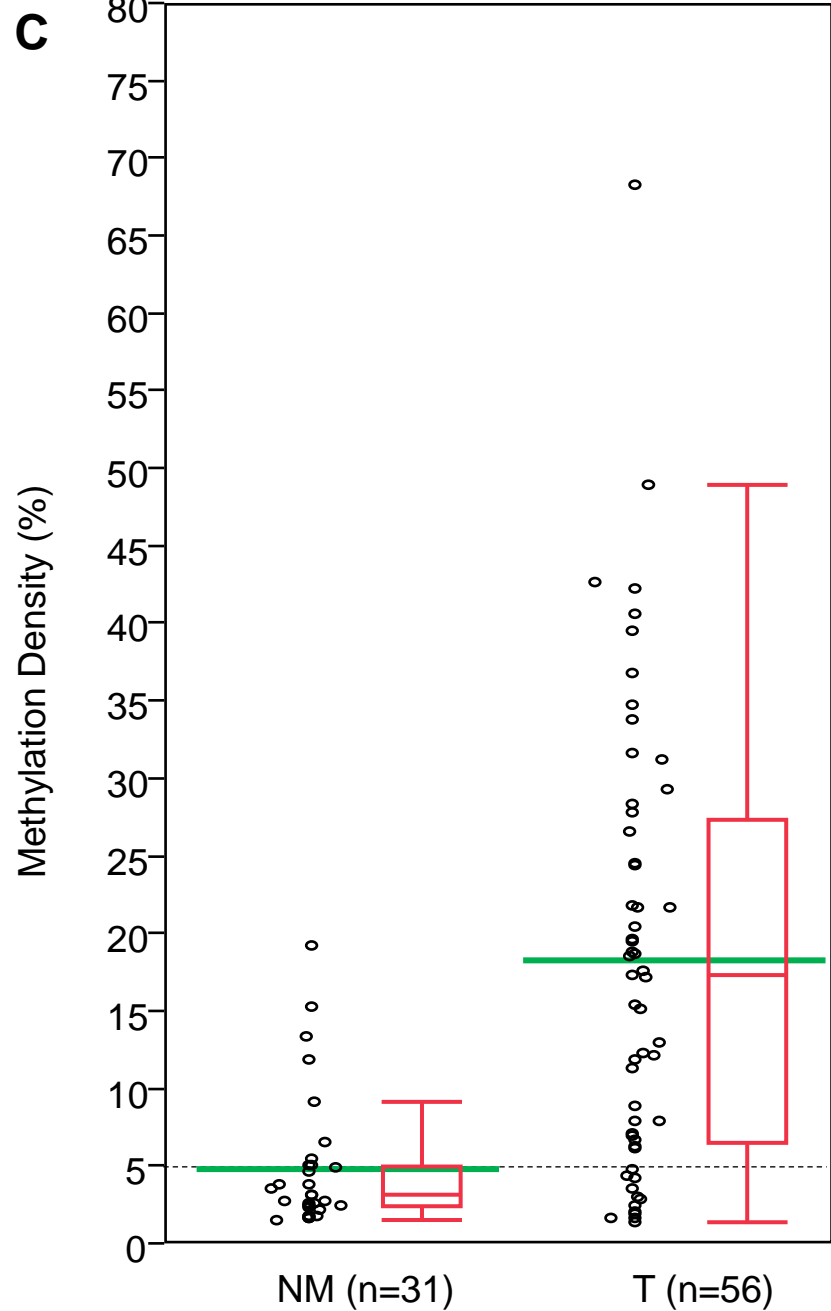


Figure 1

E

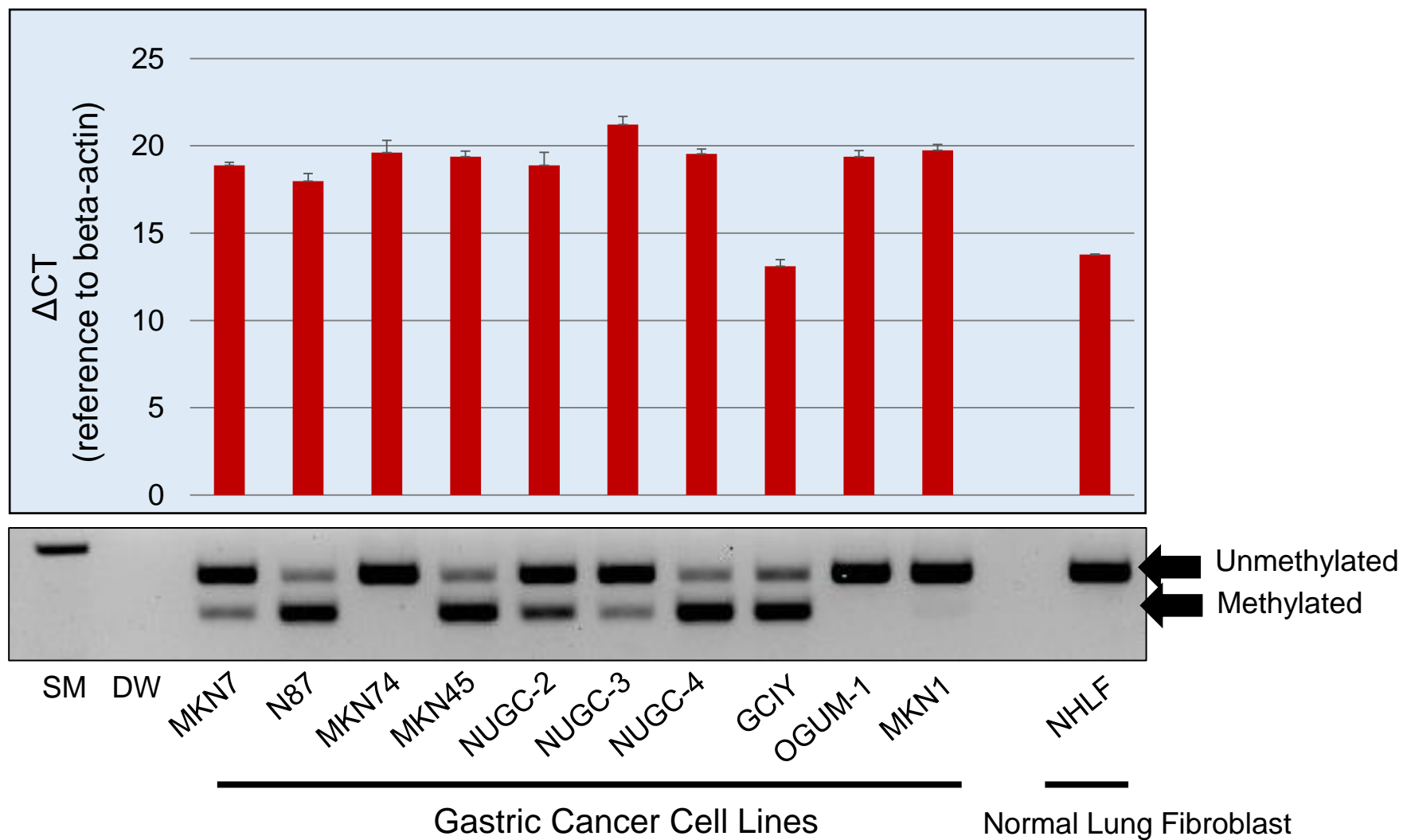


Figure 2

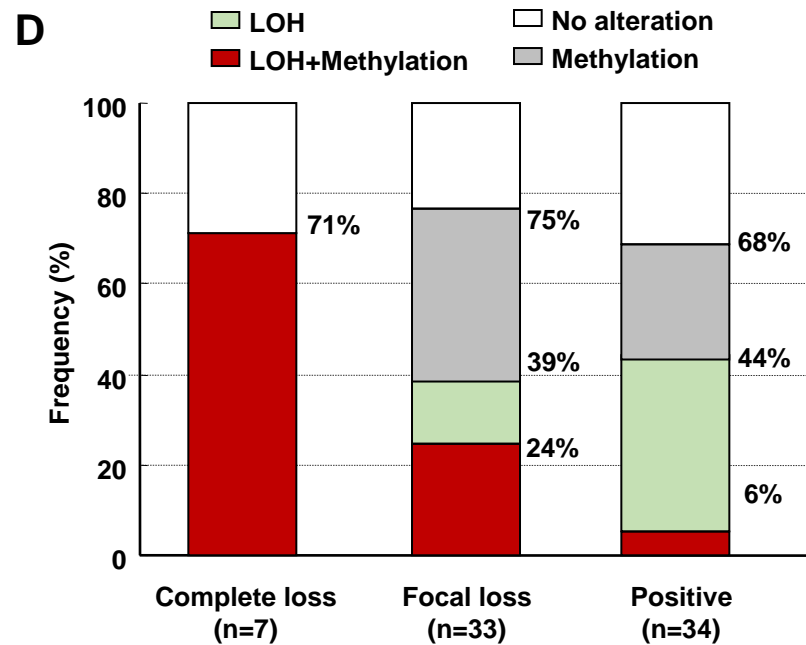
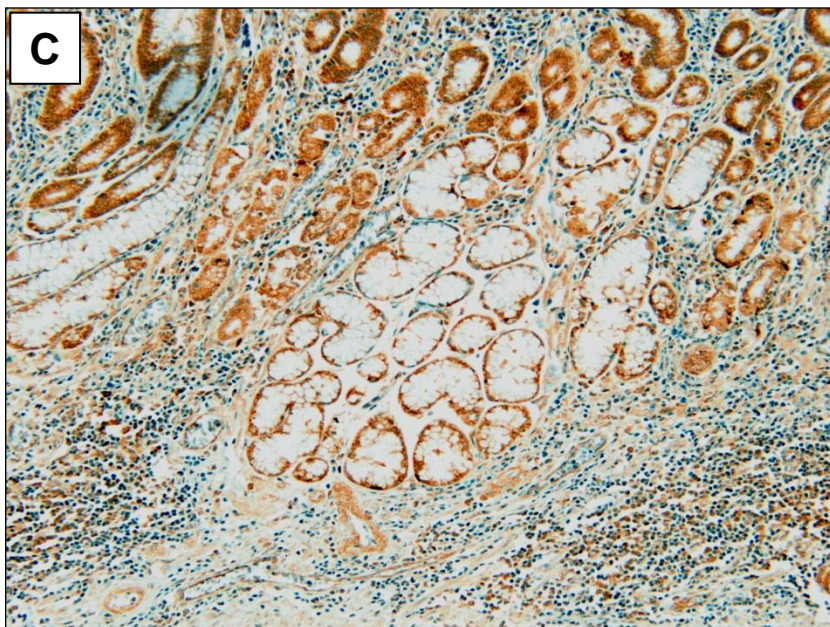
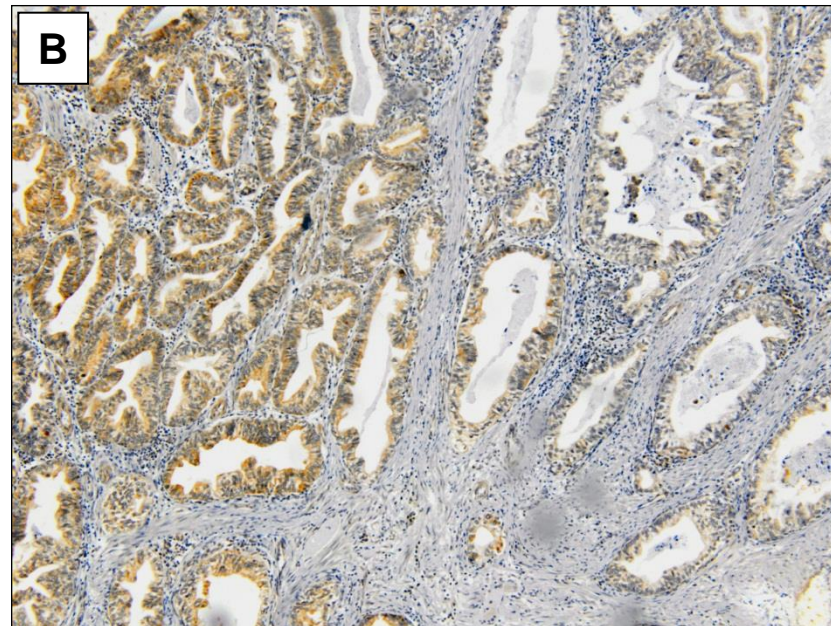
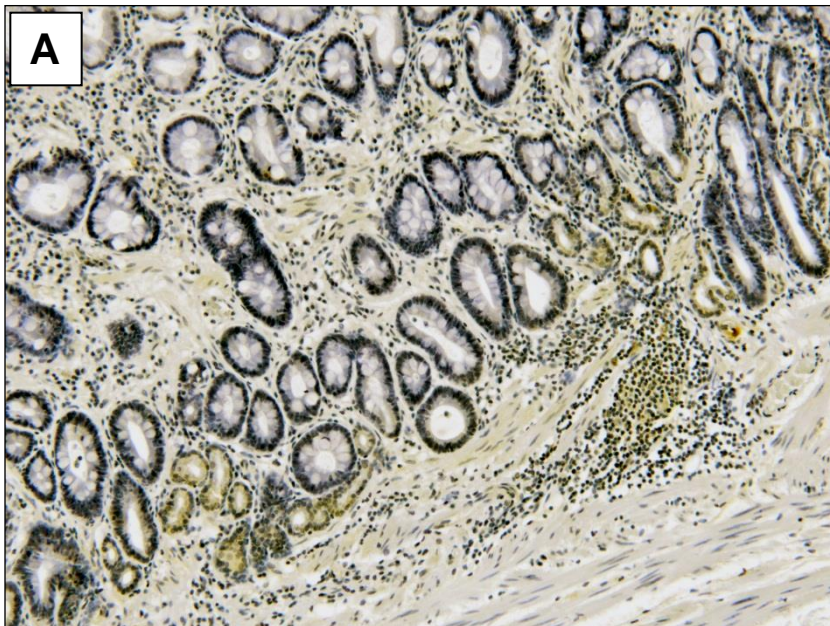


Figure 3

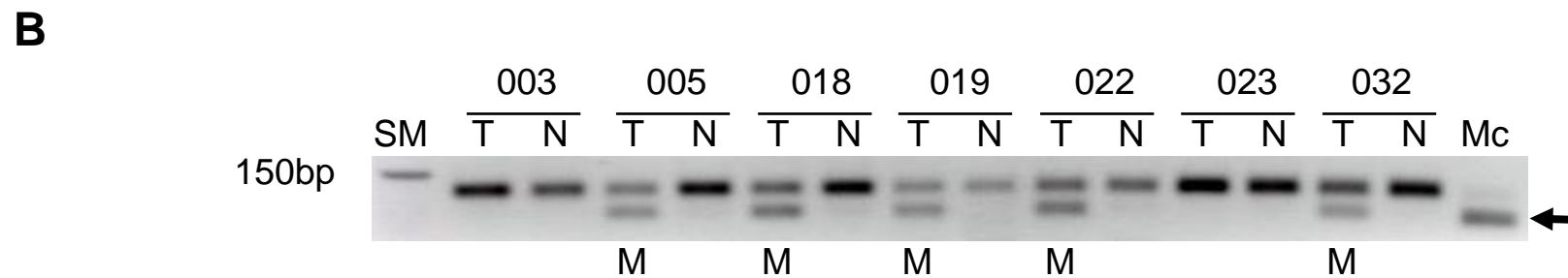
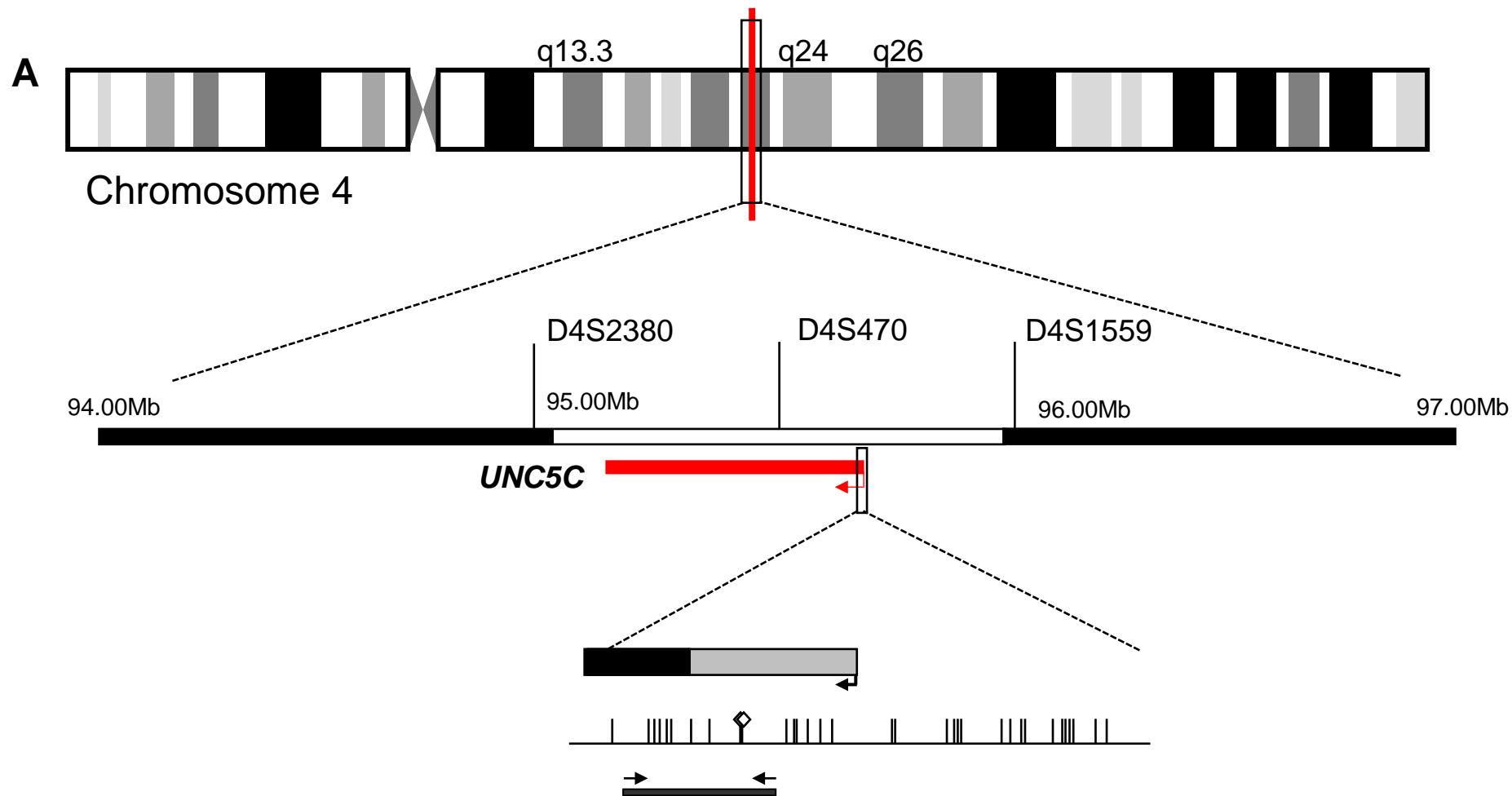


Figure 3

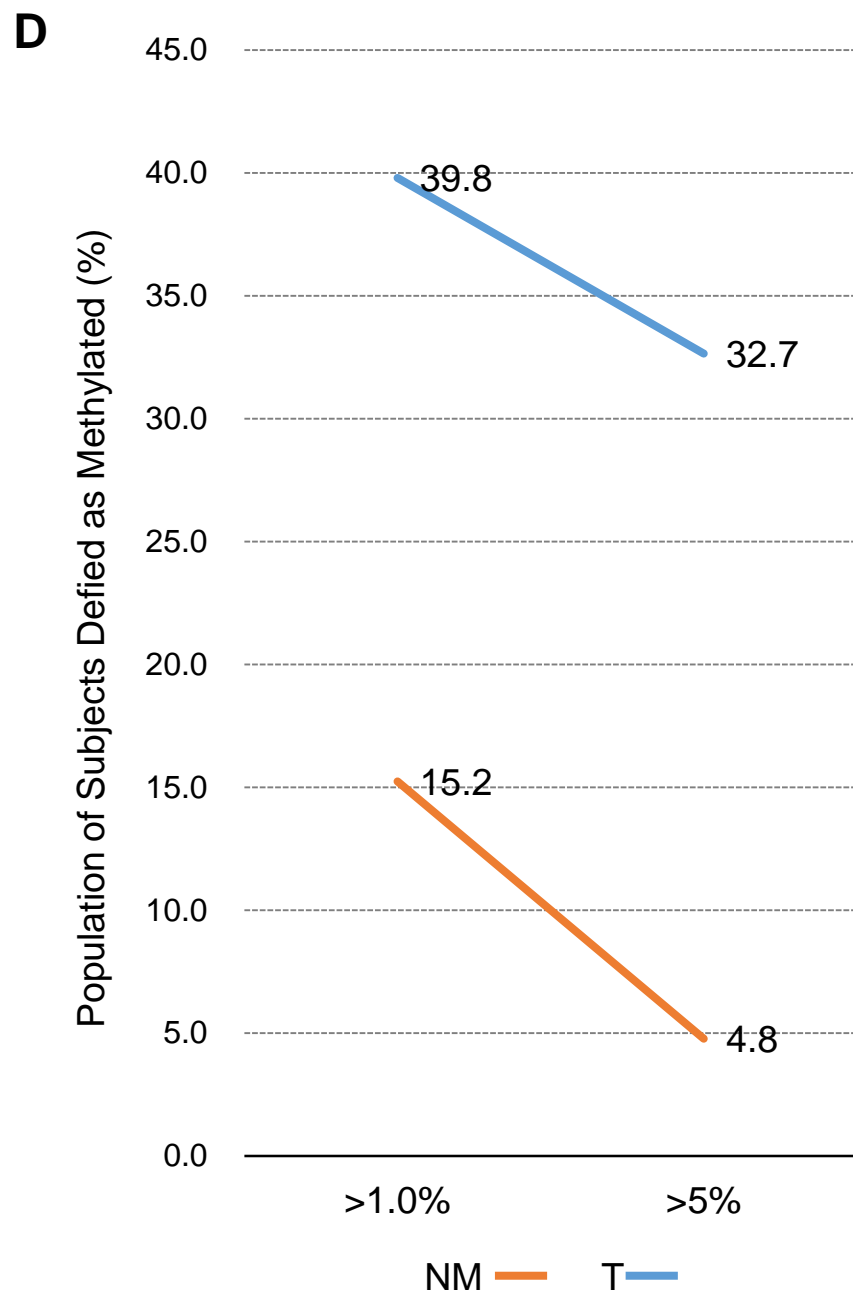
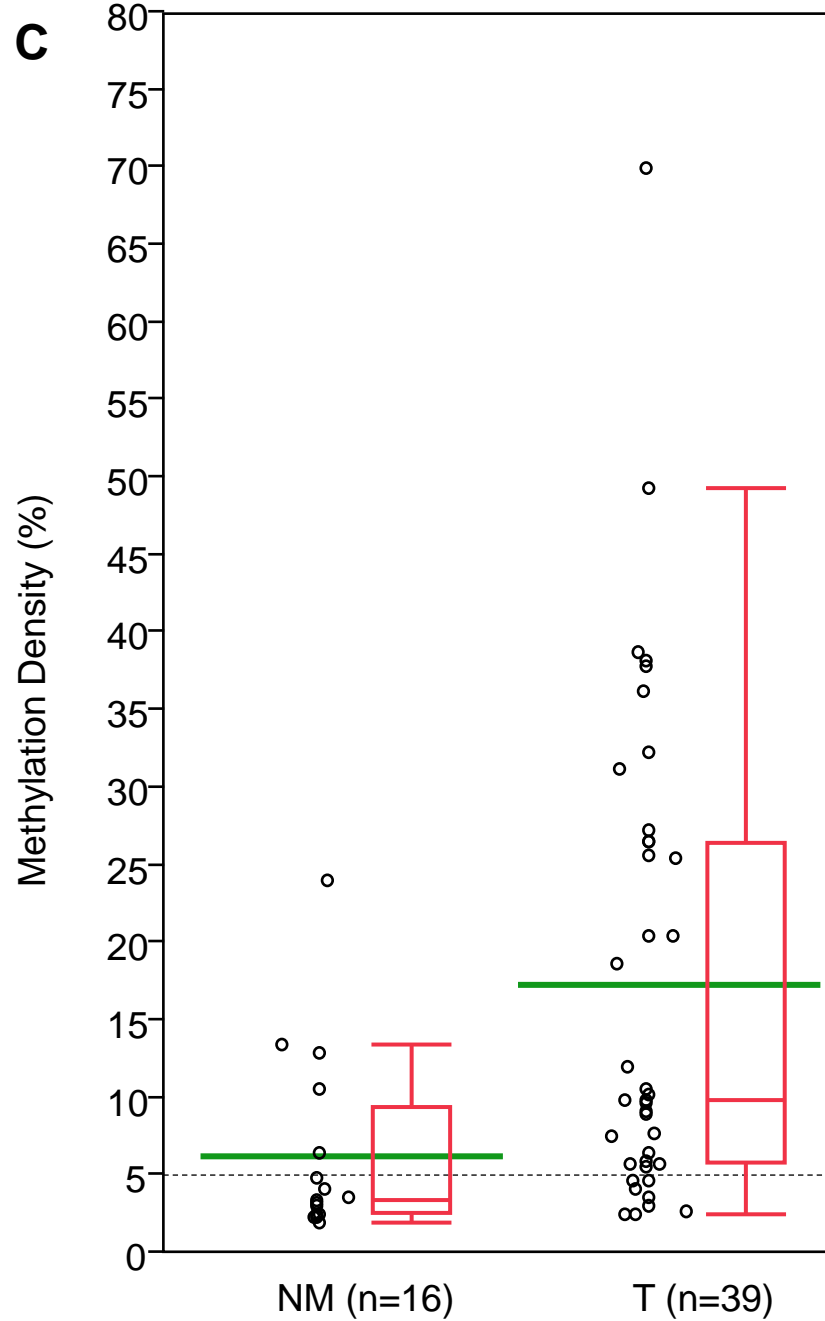


Figure 3

E

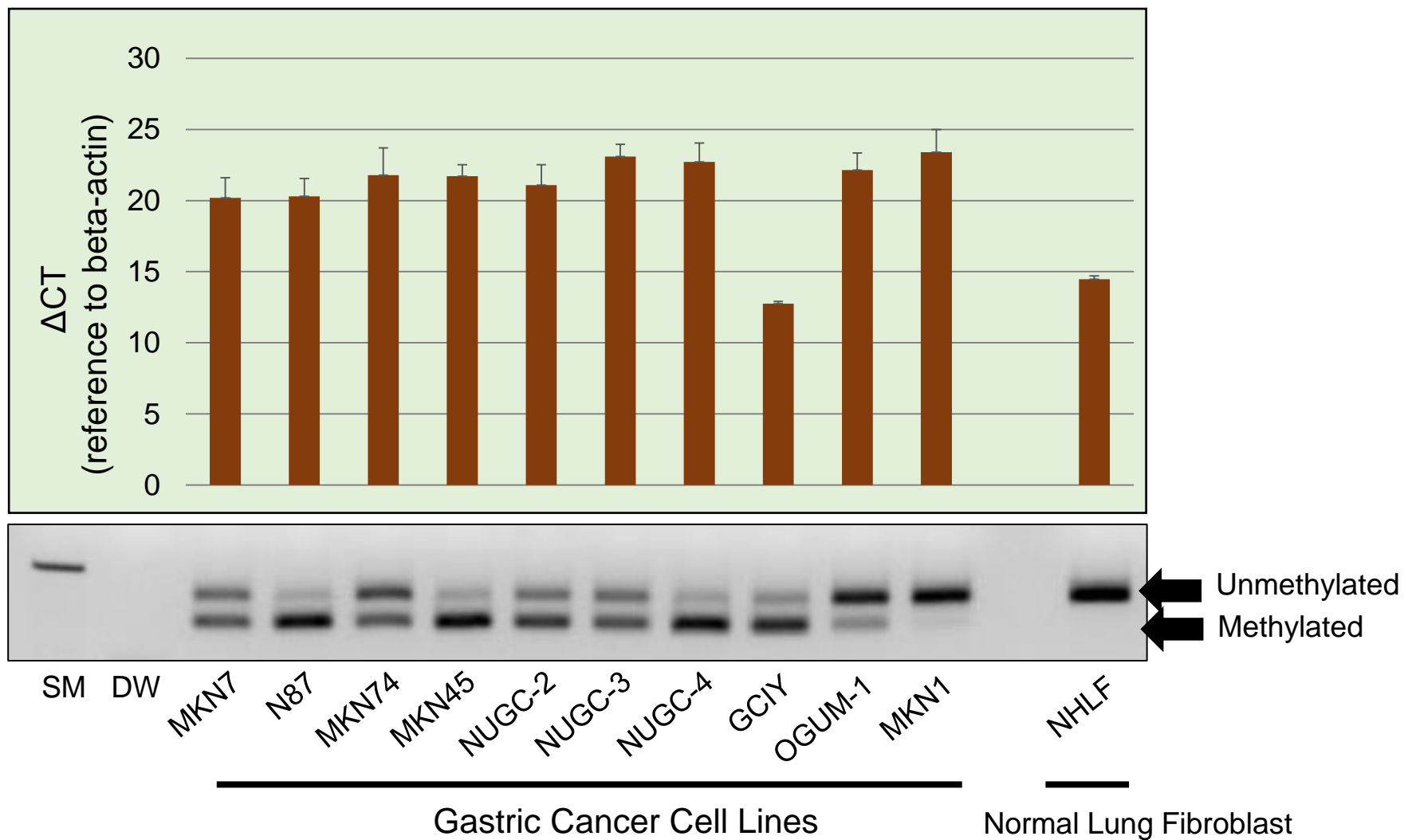


Figure 4

■ Alterations found in Both Receptors (n=29)

■ Either Receptor (n=22)

■ Neither Receptor (n=22)

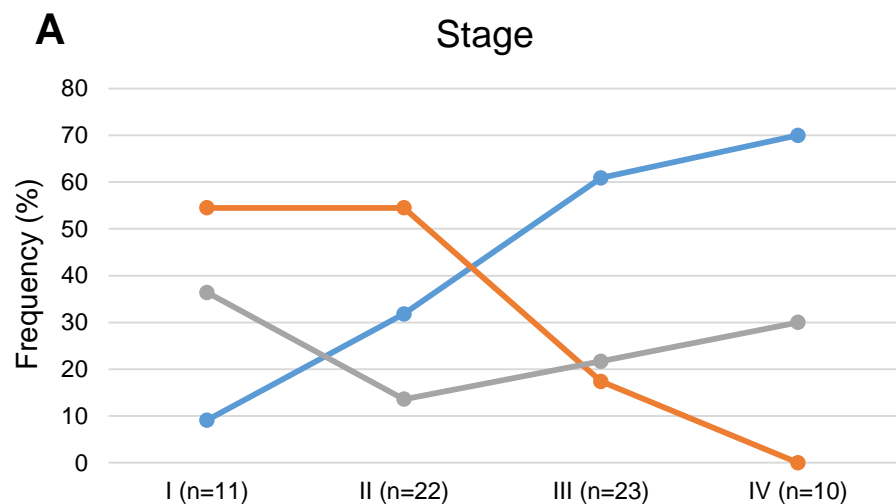
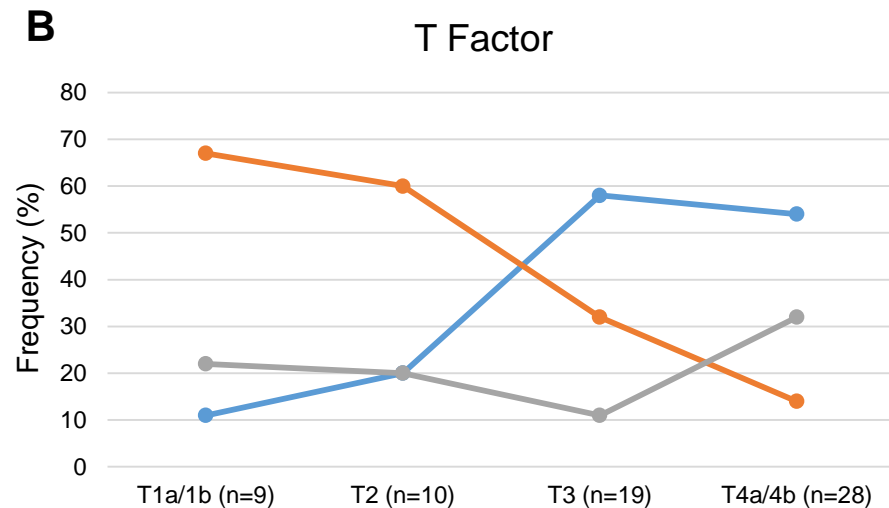
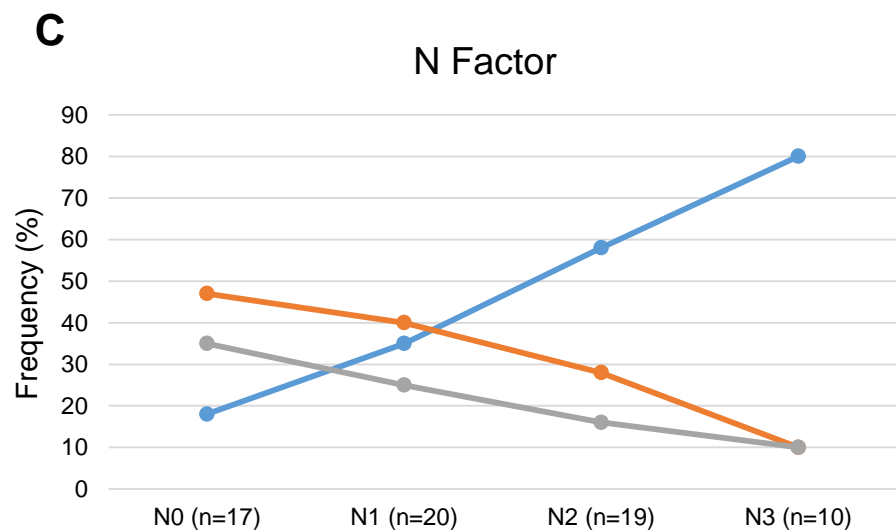
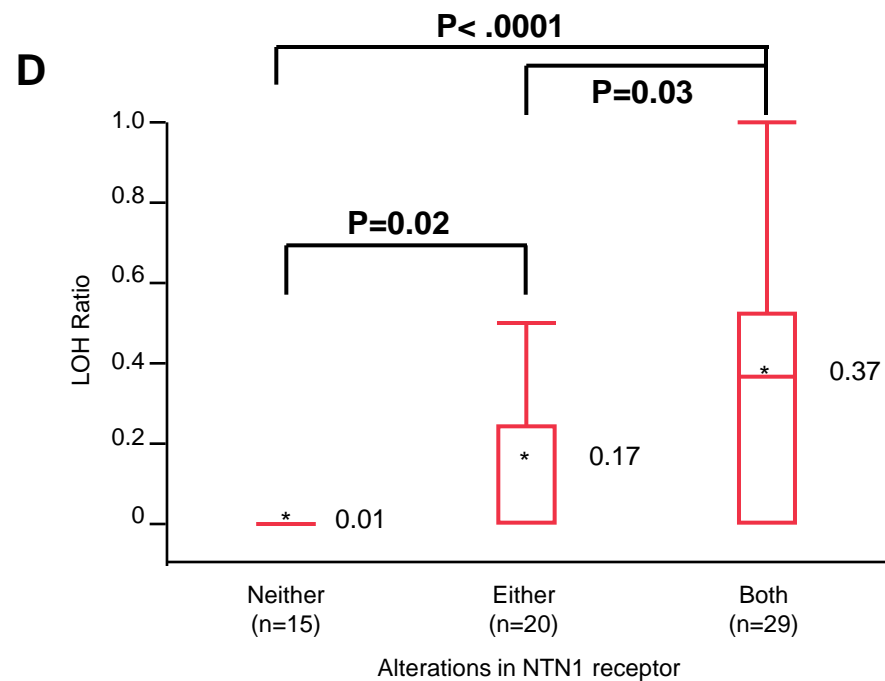
**P=0.001 *****P=0.017****P=0.01****

Figure 4

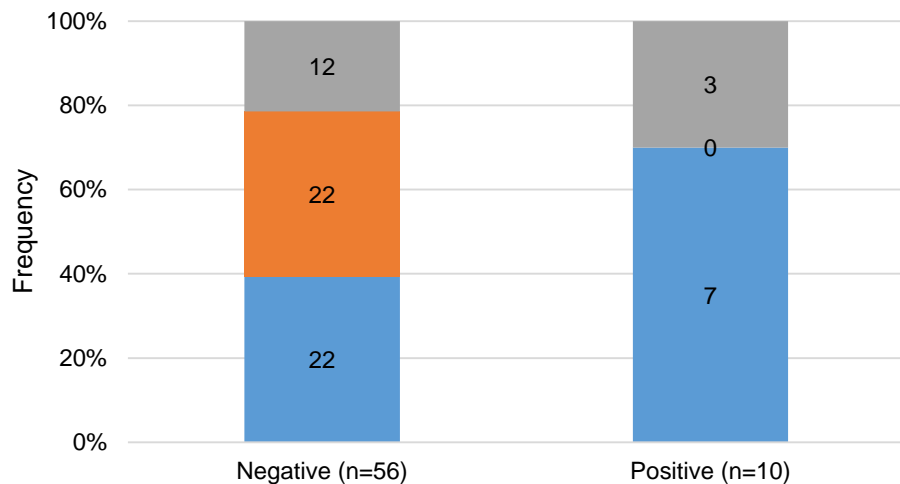
■ Alterations found in Both Receptors (n=29)

■ Either Receptor (n=22)

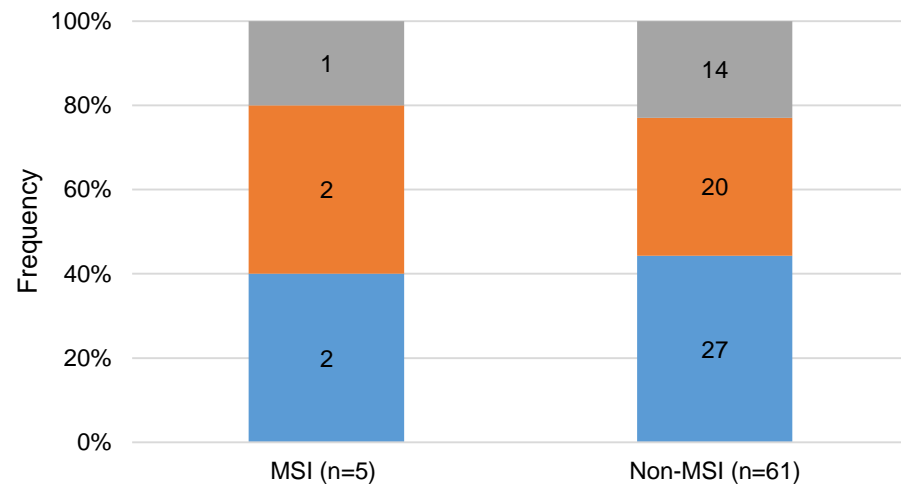
■ Neither Receptor (n=15)

E

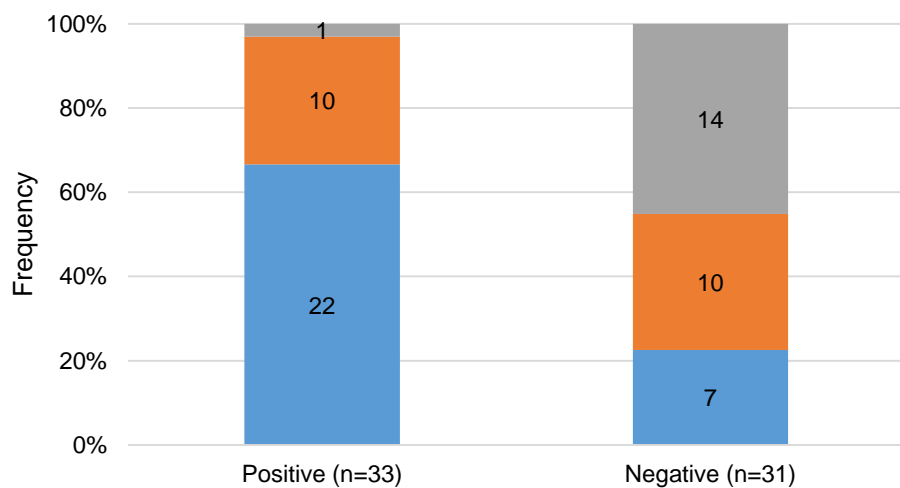
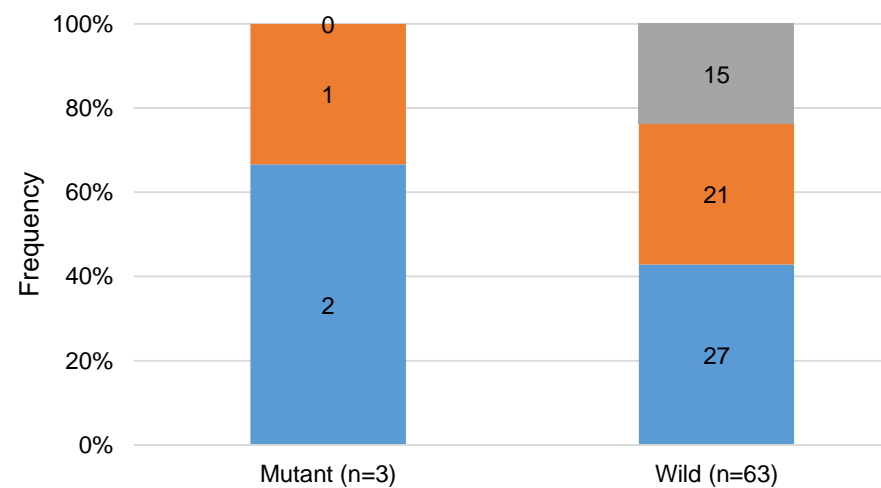
Distant Metastasis

**P=0.05****F**

MSI Status

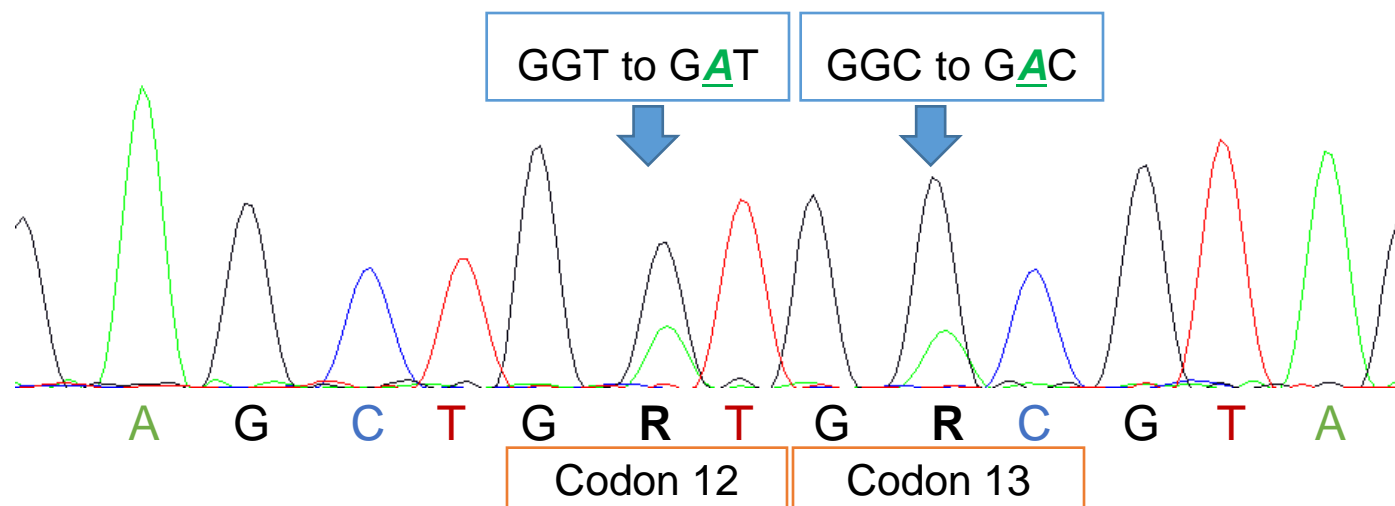
**P=0.33****G**

CIN***

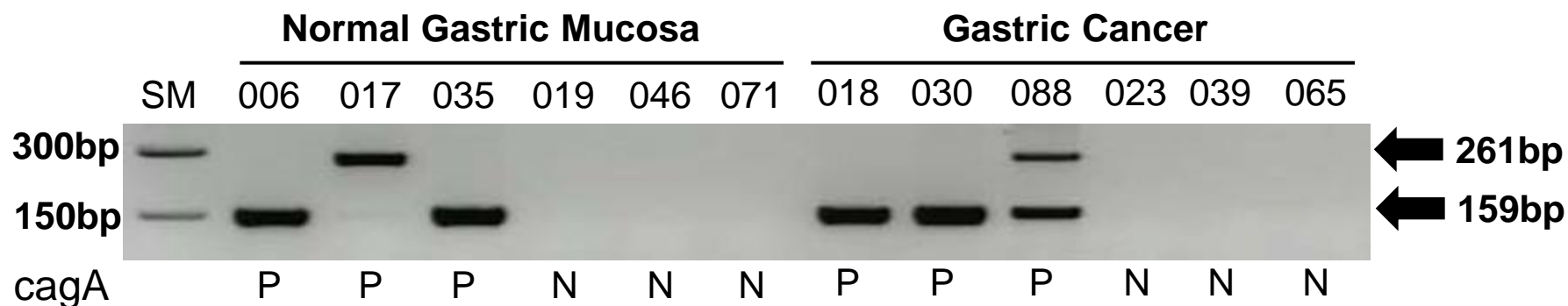
**P=0.0004****H***KRAS/BRAF/PIK3CA* Mutation Status**P=0.85**

Supplementary Figure 1

A

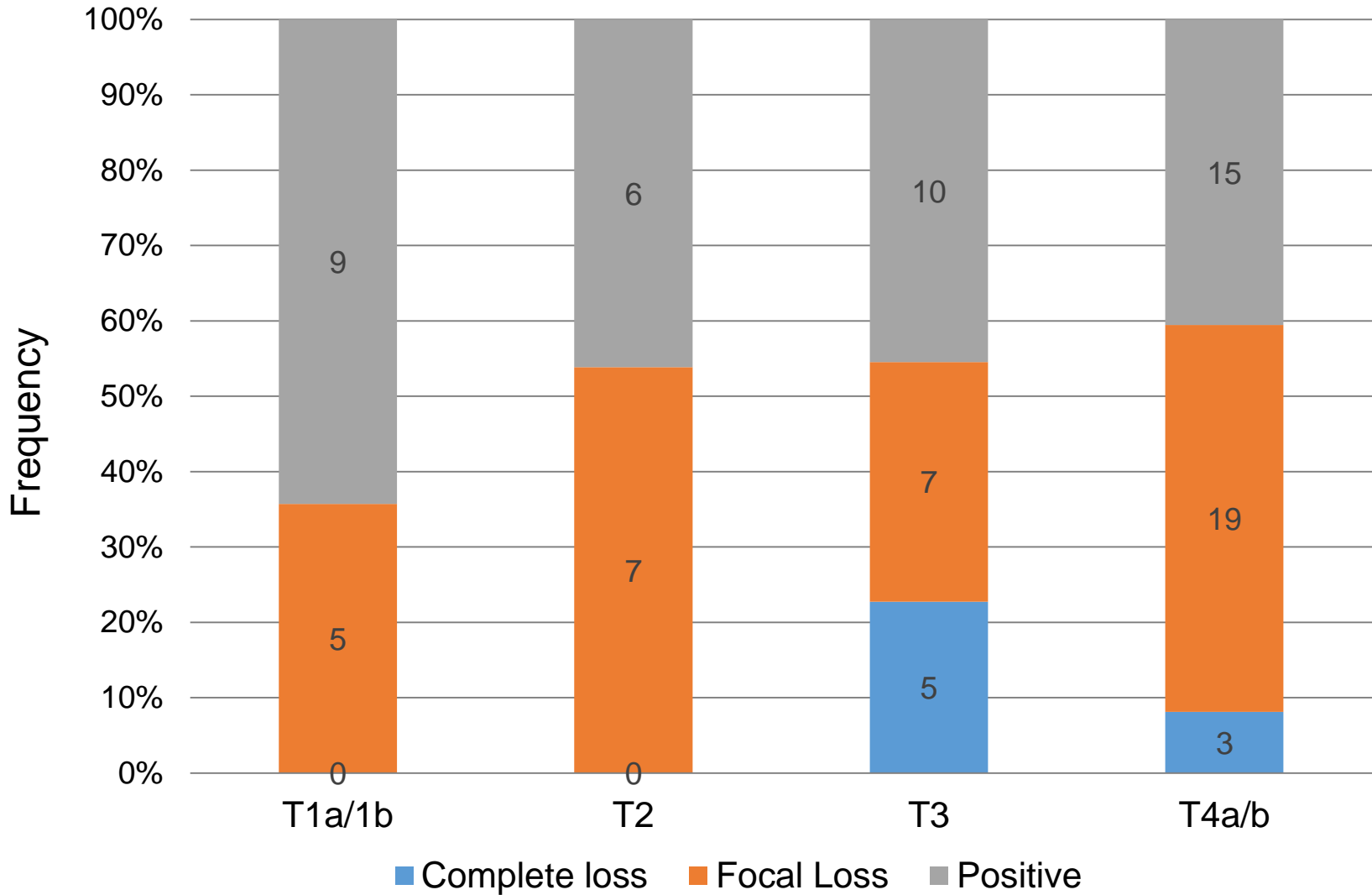


B



Supplementary Figure 2

DCC Expression Status

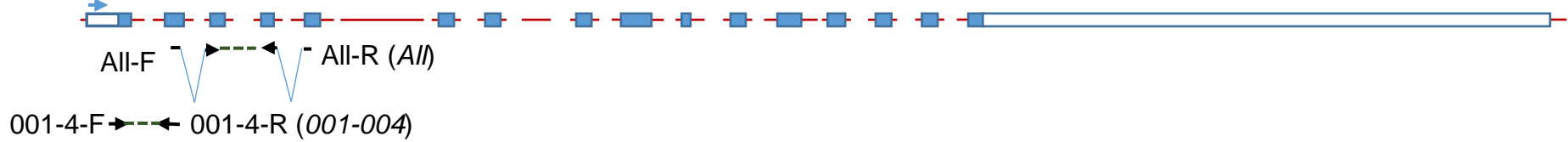


P= 0.1349 by Chi-Square test

Supplementary Figure 3

■ Coding exon □ Uncoding exon

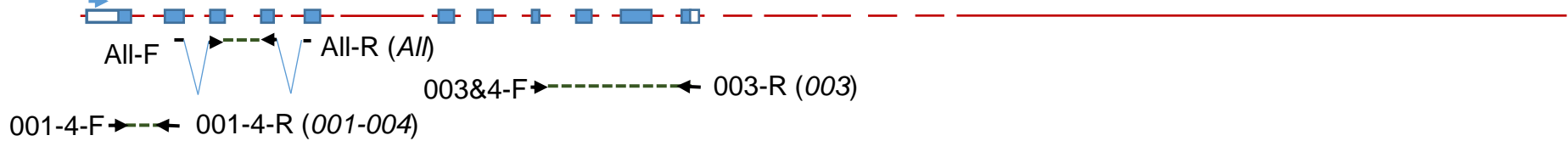
UNC5C-001



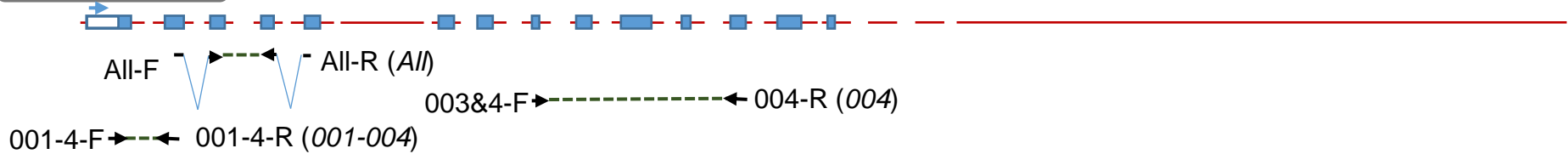
UNC5C-002



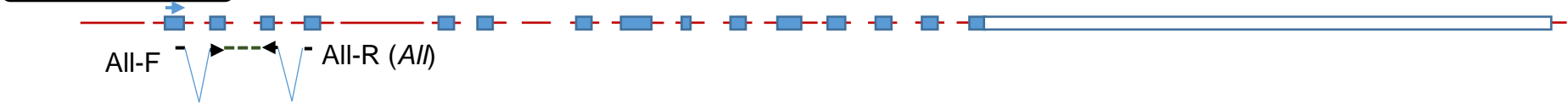
UNC5C-003



UNC5C-004

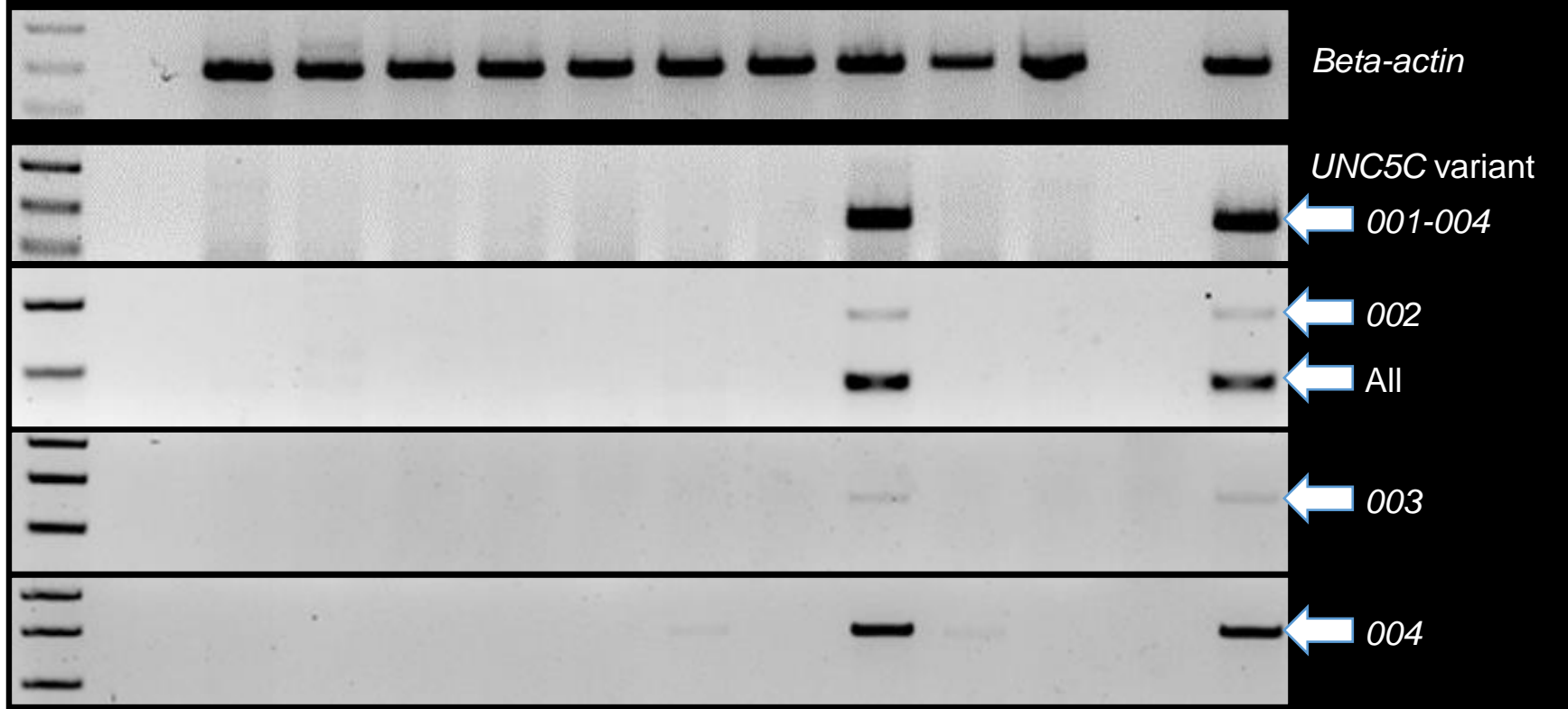


UNC5C-201

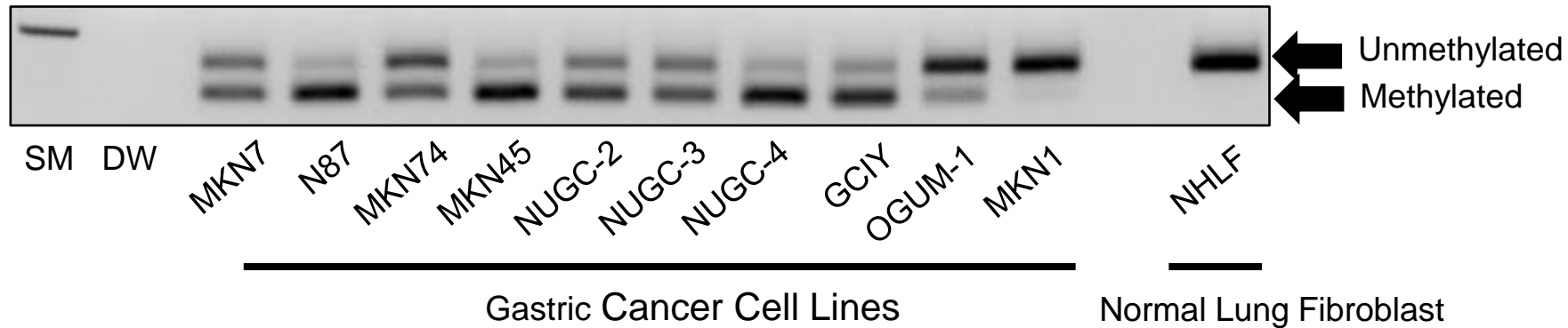


Supplementary Figure 4

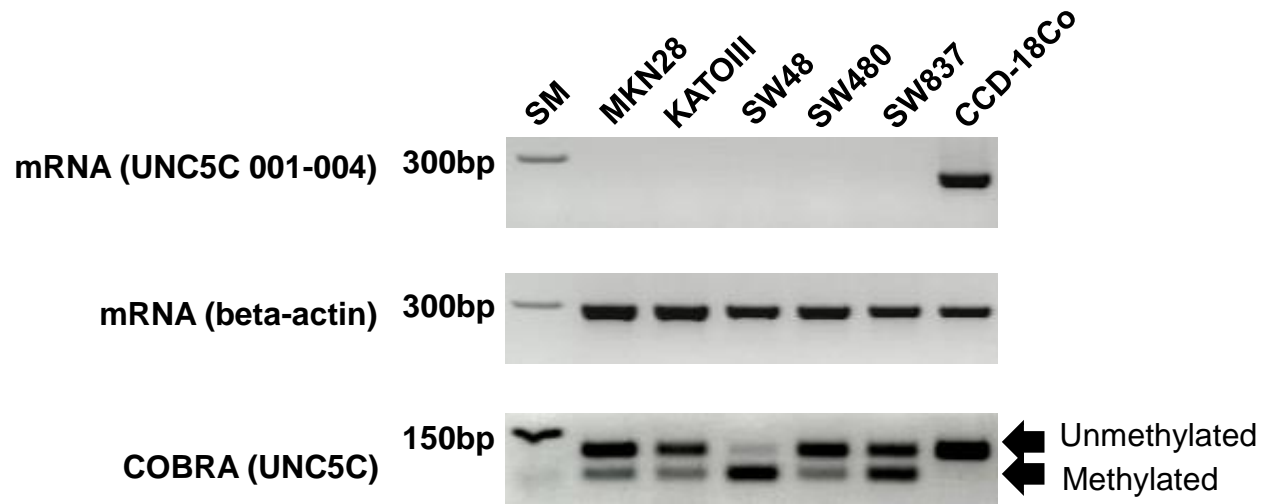
RT-PCR



COBRA



Supplementary Figure 5



Supplementary Figure 6

■ Alterations found in Both Receptors (n=29)
 ■ Either Receptor (n=22)
 ■ Neither Receptor (n=15)

