

表1 定量リアルタイム-PCRに使用したプライマー

標的遺伝子	プライマーの塩基配列
HO-1	5'-GTTCAAACAGCTCTATCGTCCTCG-3'
	5'-GACTAGTCGAAGCTGAGAGTGAGGACCC-3'
β-actin	5'-GACCTCTATGCCAACACAGT-3'
	5'-AGTACTTGCGCTCAGGAGGA-3'
SOD-1	5'-TCCCAGCATTTCAGTCT-3'
	5'-ACTCTCAGGAGAGCATTCCA-3'
SOD-2	5'-AGCTTTCAGATAGTCAGGTC-3'
	5'-GCAACGTCCCYACAGAT-3'
IL-6	5'-AAGAAAGACAAAGCCAGAGT-3'
	5'-CTGTTAGGAGAGCATTGGAA-3'
TNFα	5'-CTCAAATTCGAGTGACAAGC-3'
	5'-TTGTCCCTTGAAGAGAACCT-3'

表1 田尻絢子

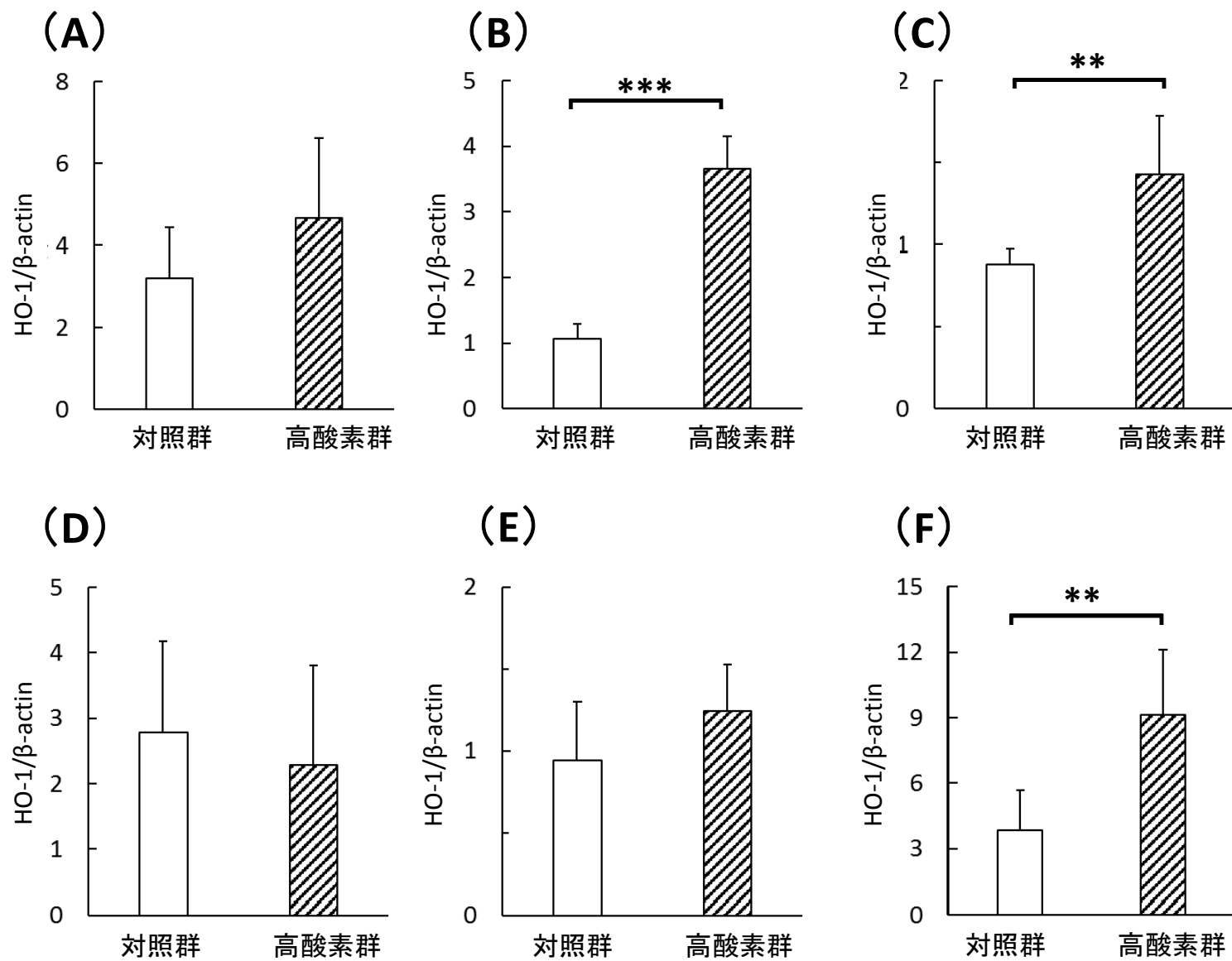


図1 田尻絢子

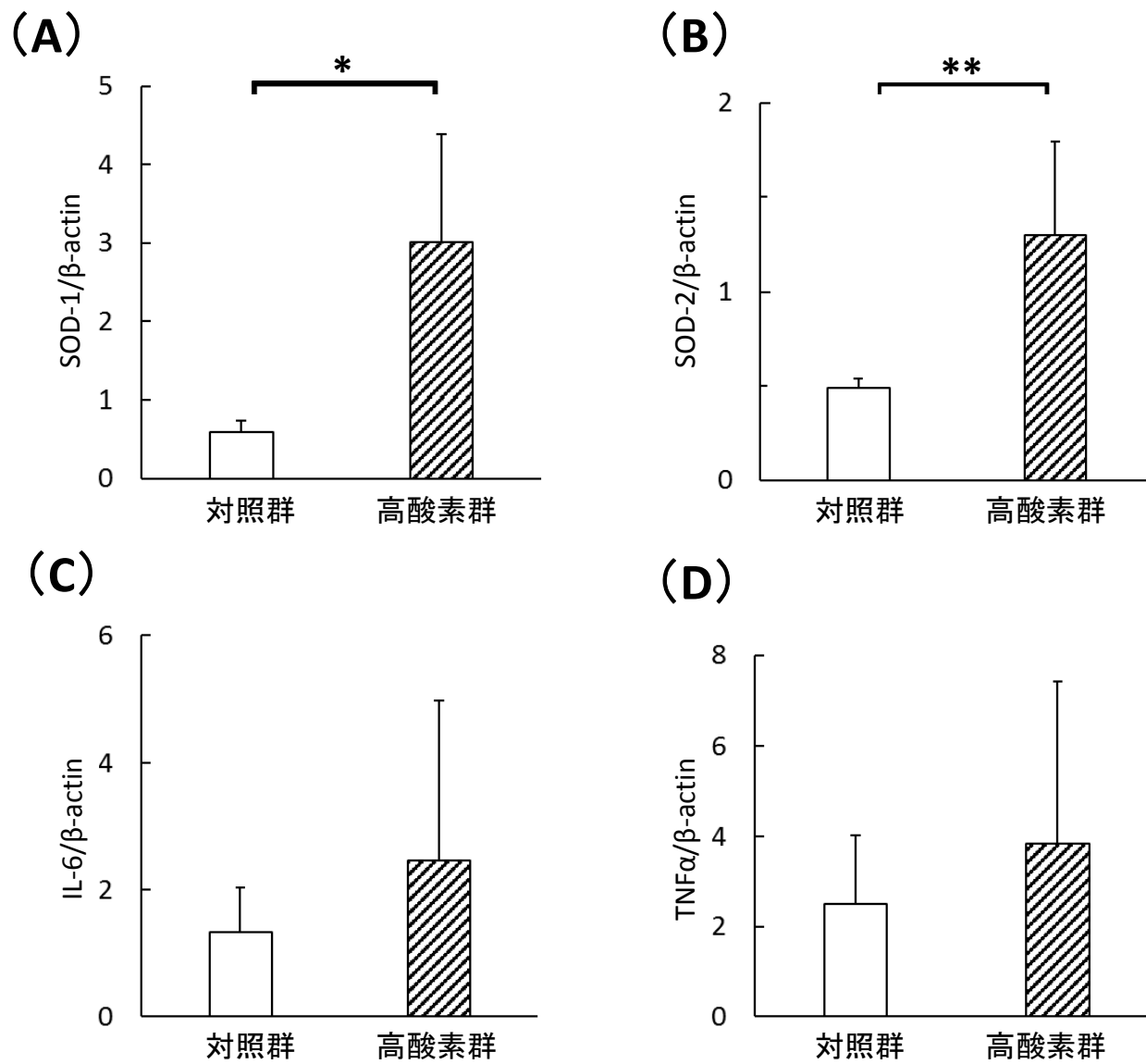


図2 田尻絢子

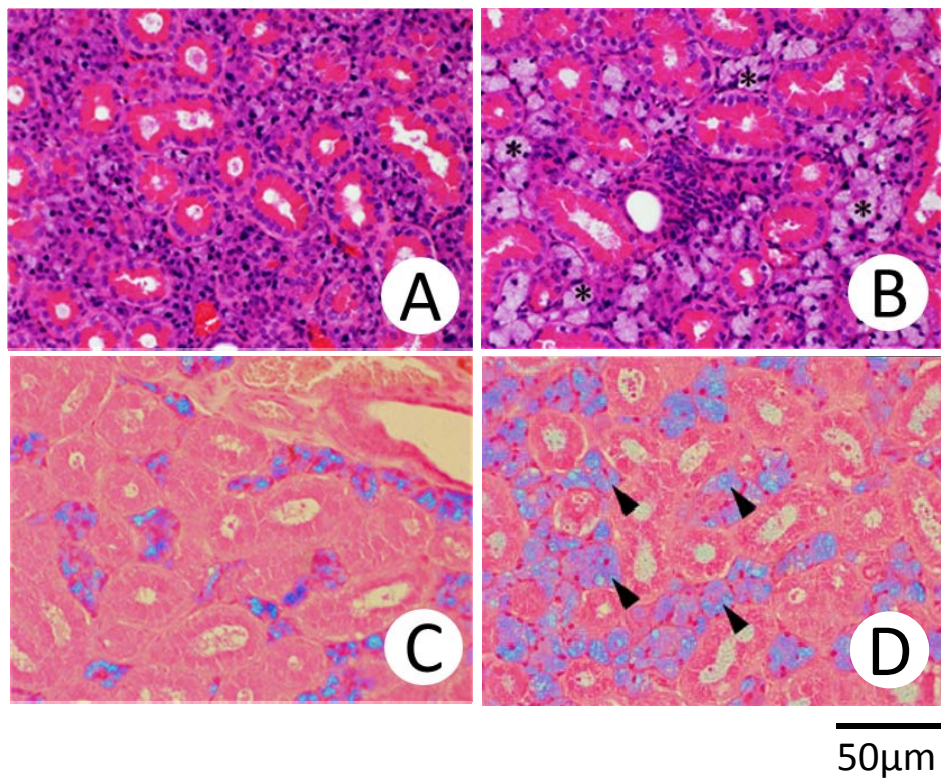
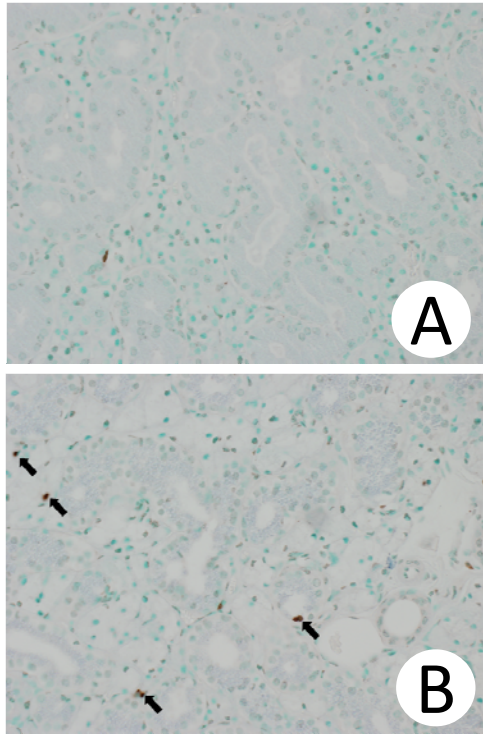


図3 田尻絢子

(a)



50μm

(b)

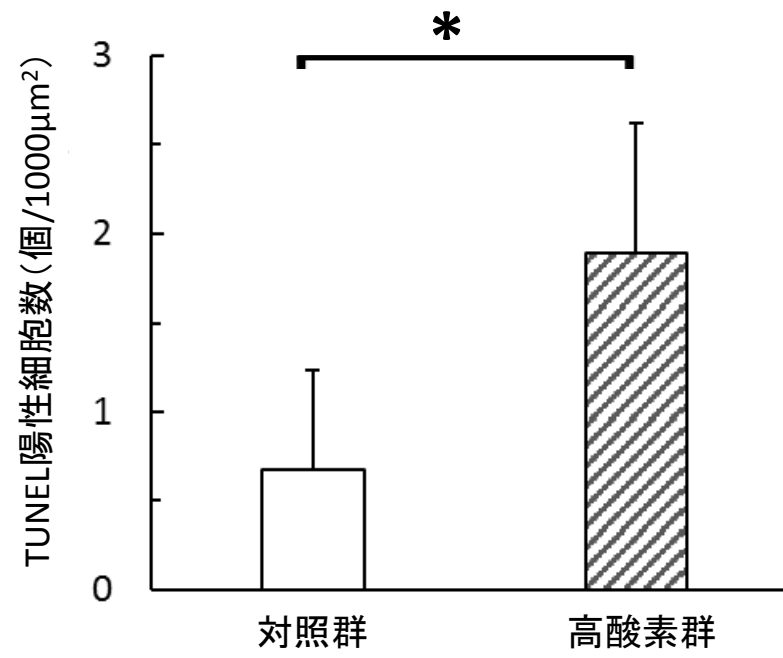
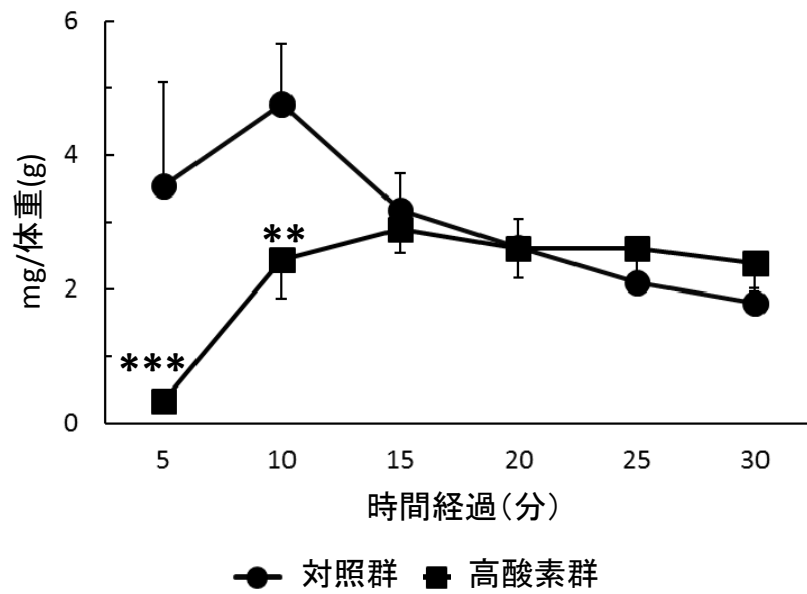


図4 田尻絢子

(A)



(B)

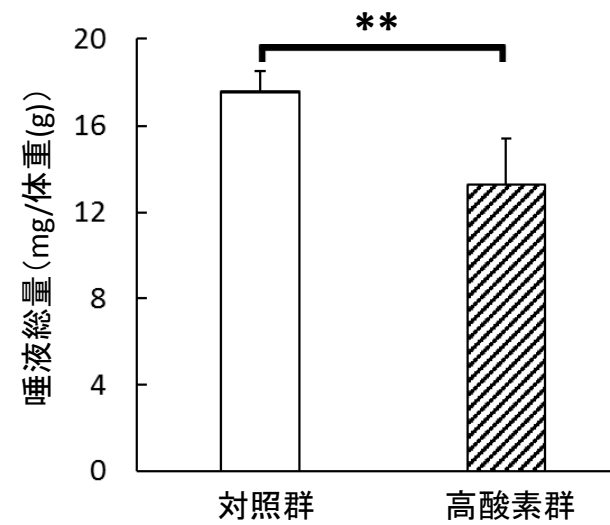


図5 田尻絢子

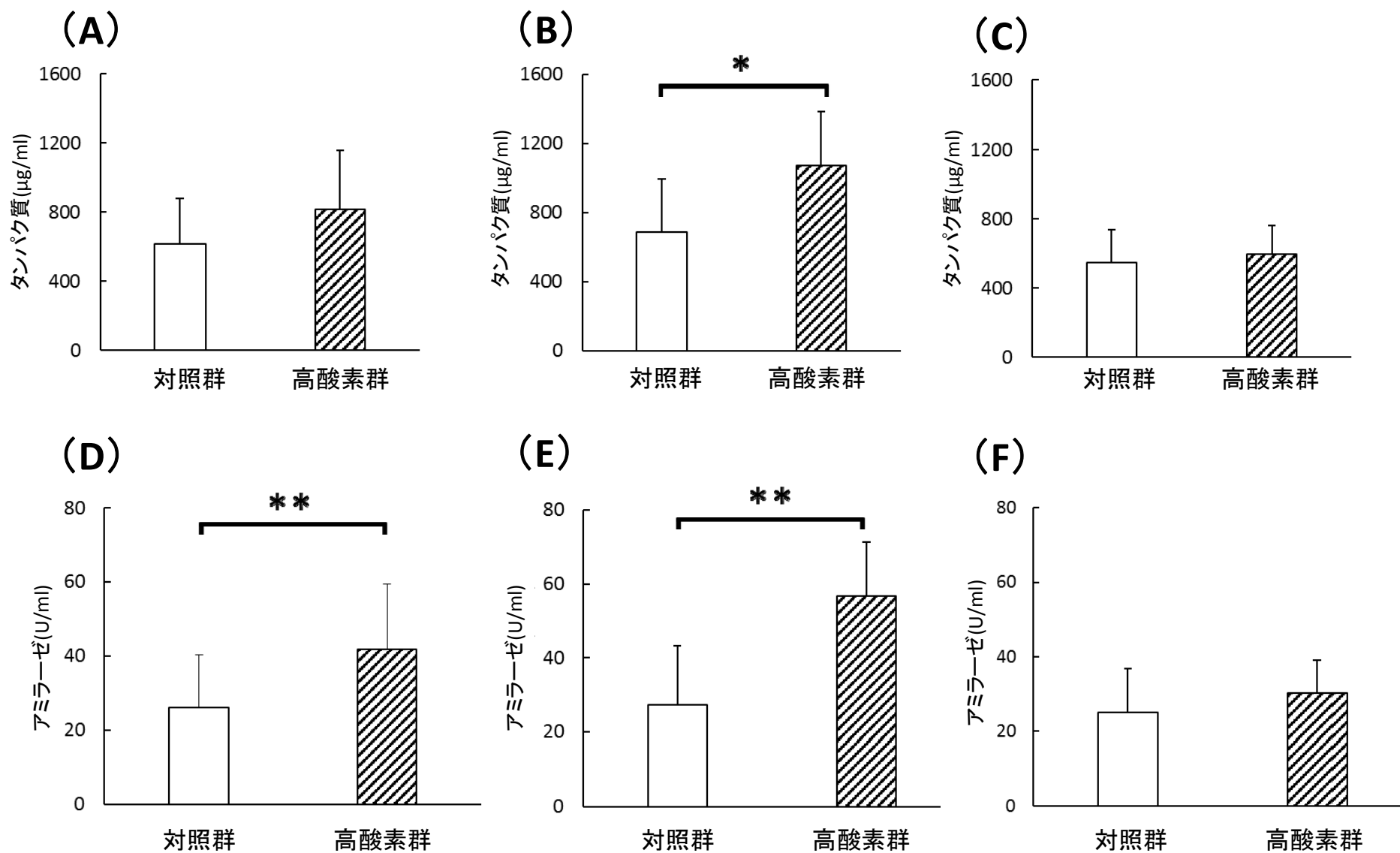
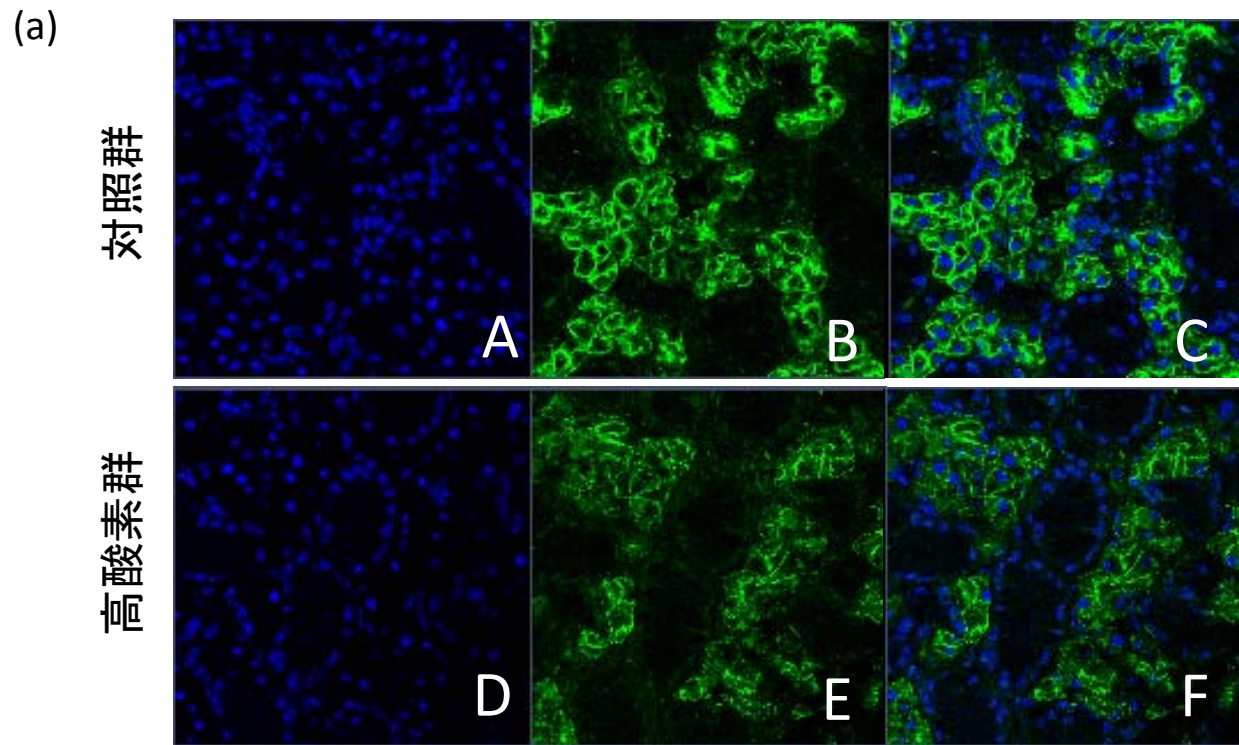
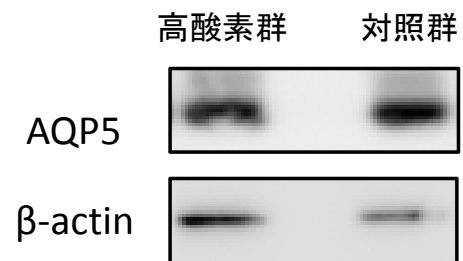


図6 田尻絢子



(b-1)



(b-2)

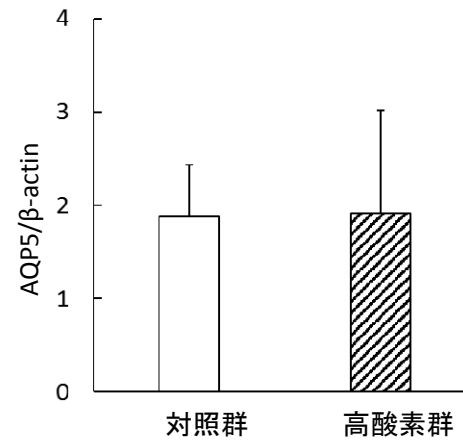


図7 田尻絢子