

Figure 1.

Model 1 shows that ALT (autistic-like traits) exert a direct effect on difficulty in communication. Model 2 shows that confidence in communication mediated the relationship between ALT and difficulty in communication in addition to Model 1. Model 3 incorporated the four elements of communication confidence. Model 2b shows that ALT (autistic-like traits) exert a direct effect on difficulty in communication and on poor mental health status and difficulty in communication exerts an effect on GHQ. e: error

Figure 2.

Study flowchart for subject sampling and attrition

Figure 3.

The path coefficient of Model 1, 2, and 3. The hypothetical Model 1, 2 and 3 were saturation models. The correlation arrows among e1–4 are omitted (Model 3).

Figure 4.

The path coefficients of Model 2b. $\chi^2 = 2.809$, degrees of freedom = 1, significance probability = 0.094, GFI = 0.999, AGFI = 0.989, NFI = 0.994, CFI = 0.996, RMSEA = 0.037, and AIC = 20.809.

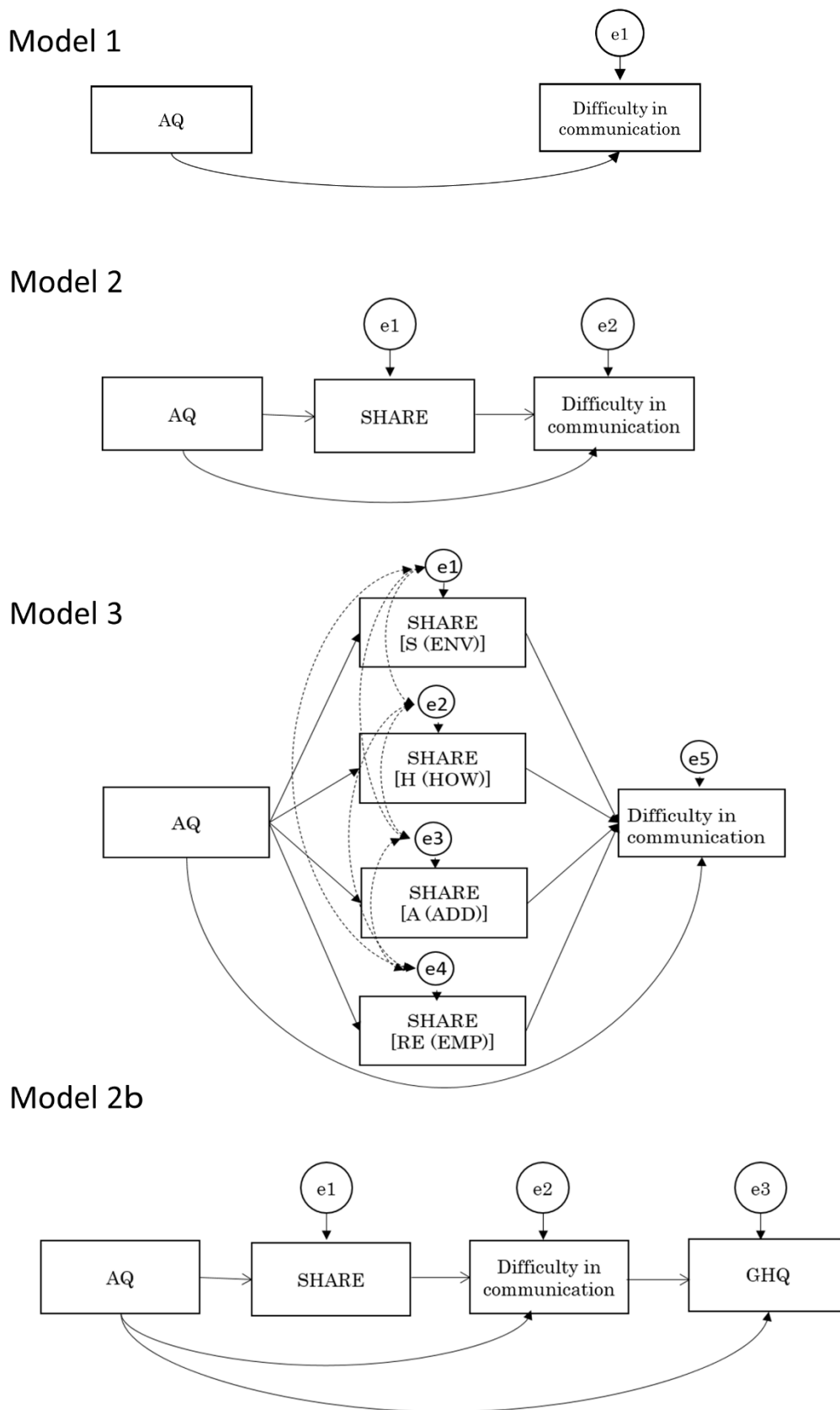


Figure 1.

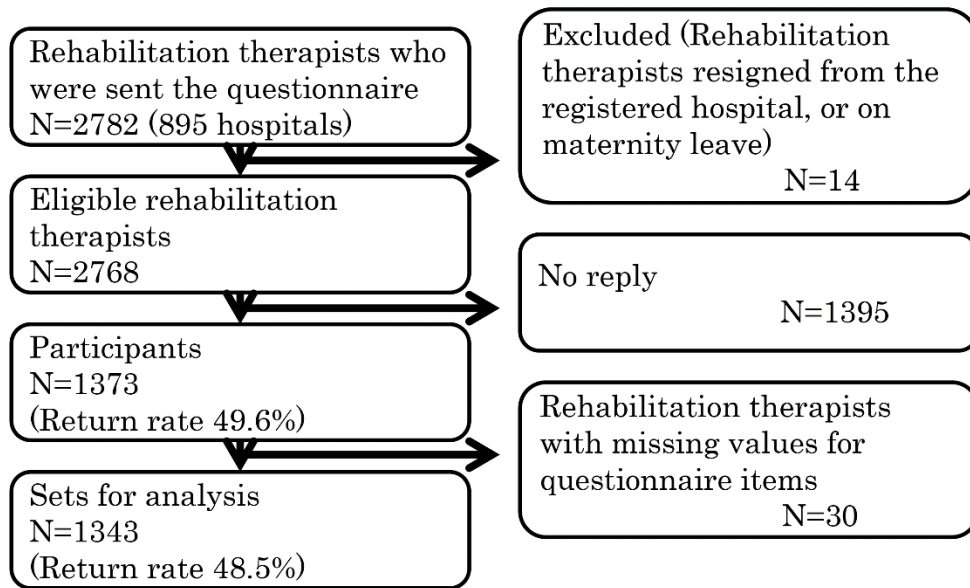


Figure 2.

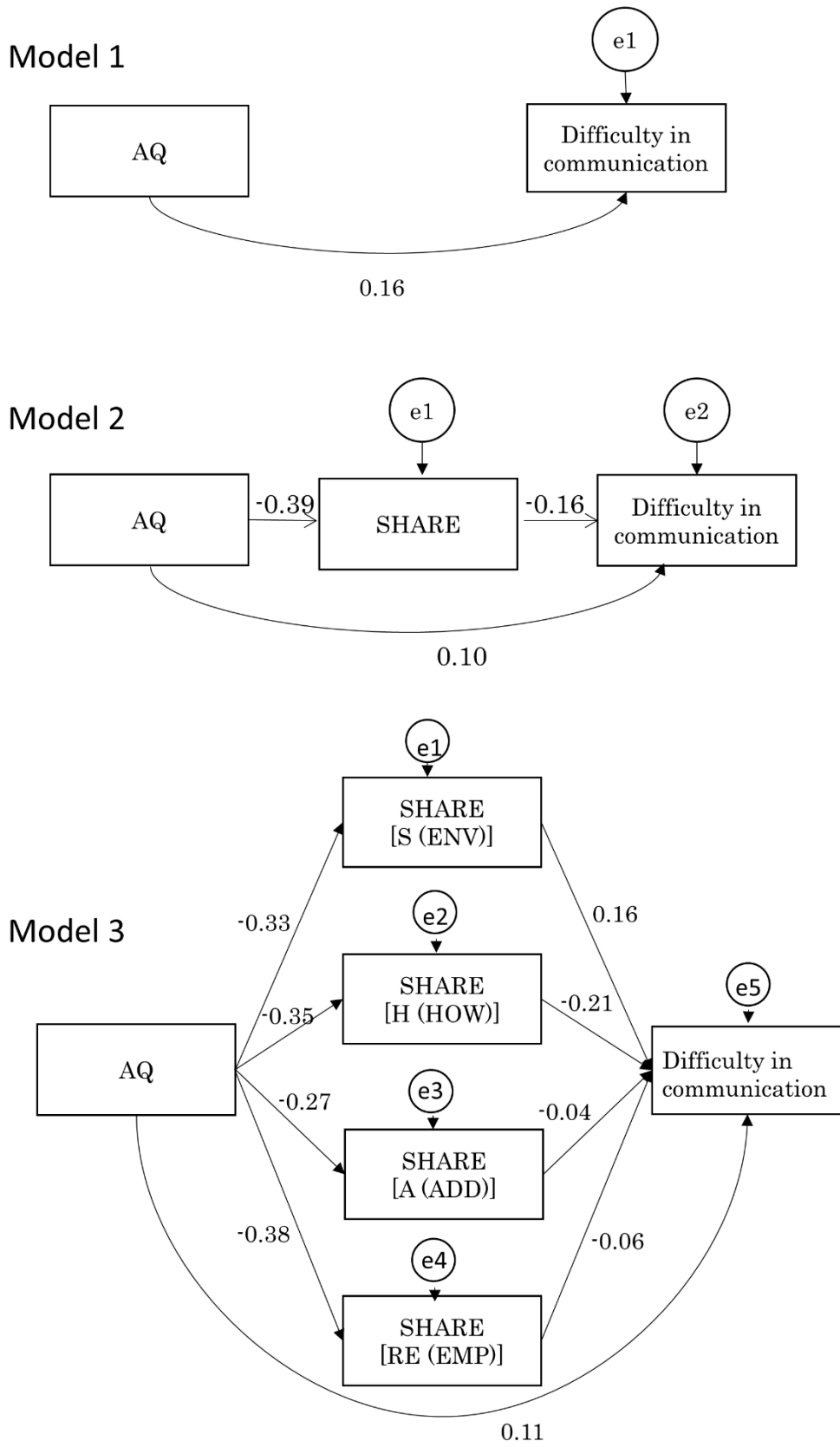


Figure 3.

Model 2b

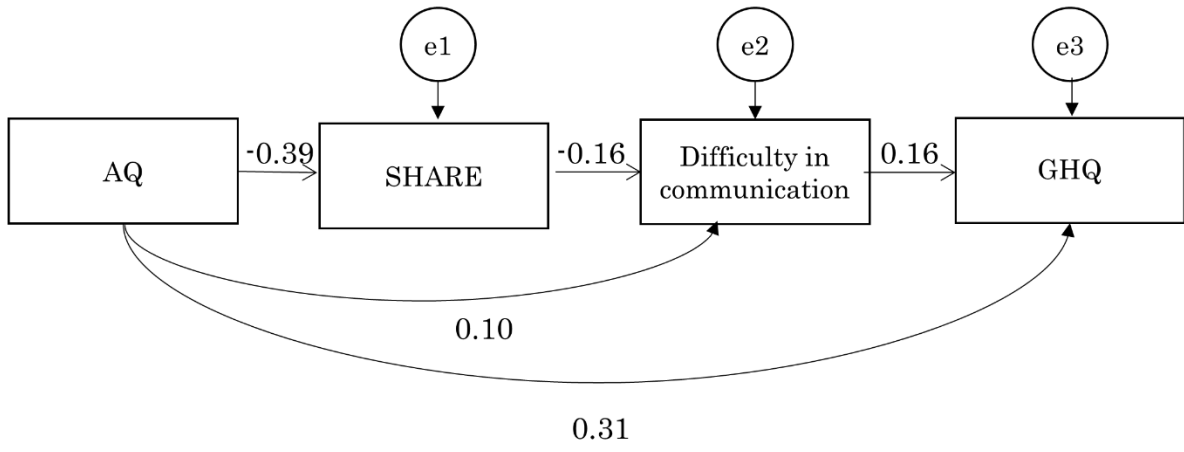


Figure 4.